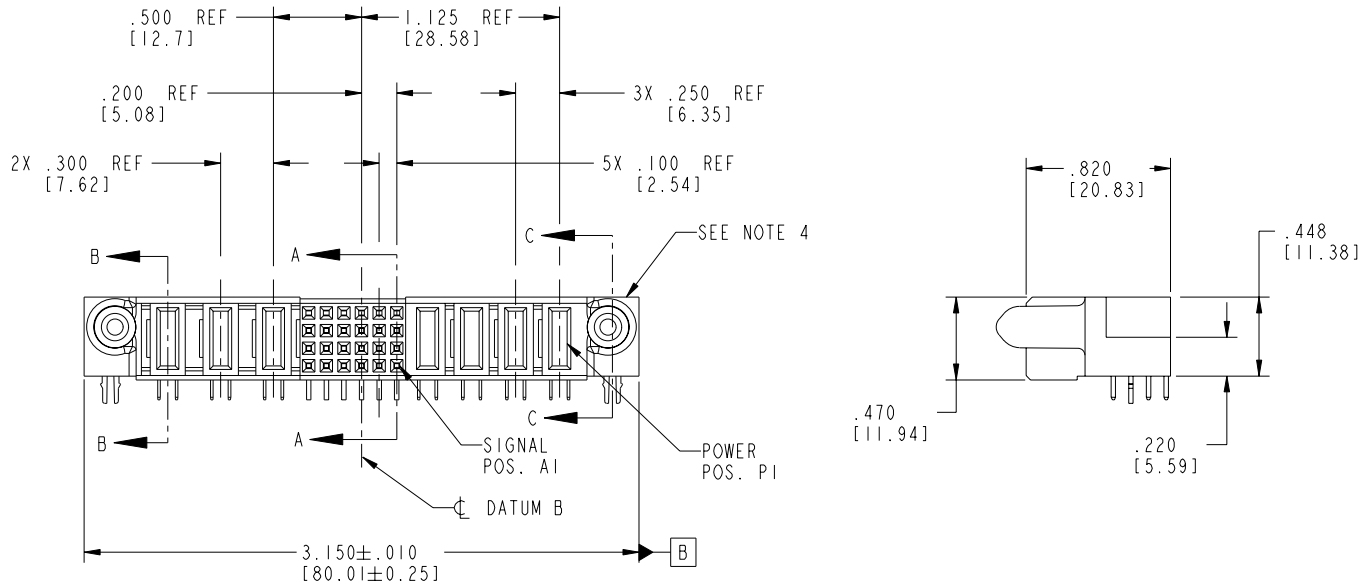
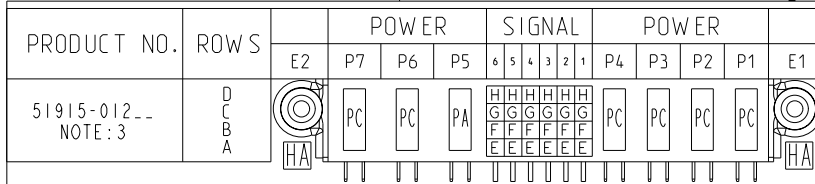


Tous droits strictement réservés. Reproduction ou communication a des tiers interdite sous quelque forme que ce soit sans autorisation écrite du propriétaire. Propriété de c FCI. Droits de reproduction FCI.

All rights strictly reserved. Reproduction or issue to third parties in any form whatever is not permitted without written authority from the proprietor. Property of FCI. Copyright FCI.



CODE	DIM "M" MATING LENGTH	CONTACT TYPE
E	N/A [N/A]	SIGNAL
F	N/A [N/A]	SIGNAL
G	N/A [N/A]	SIGNAL
H	N/A [N/A]	SIGNAL
PA	.042 [1.07]	POWER
PC	.092 [2.34]	POWER
HA	N/A [N/A]	HOLD-DOWN

mat'l code SEE NOTE 2				tolerances unless otherwise specified		CUSTOMER		 www.fciconnect.com	
ltr	ecn no.	dr	date	linear	.XX±.01/0.X±0.3	COPY		projection	
A	V21205	CGD	07/22/02		.XXX±.005/0.XX±0.13	INCH/MM		title 4P + 24S + 3ACP	
B	DG05-0353	CS	09/26/05	angles	.XXX±.0020/0.XX±0.051	1:1		R/A SOLDER RECEPTACLE	
				dr	C. DAILY 07/22/02	scale		product family PwrBlade code	
				enrg	M. MOSTOLLER 07/22/02	A		size 213	
				chr	M. MOSTOLLER 07/22/02	A		dwg no 51915-012	
				appd	M. MOSTOLLER 07/22/02	A		sheet 1 of 4	
sheet index	revision sheet	B 1	B 2	B 3	B 4				

cage code 22526 4

PDM: Rev:B

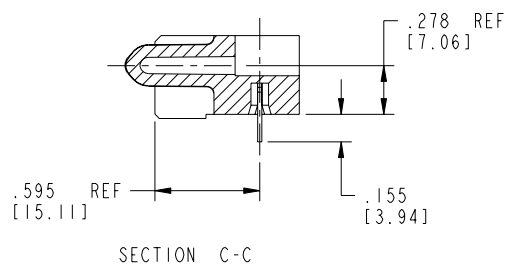
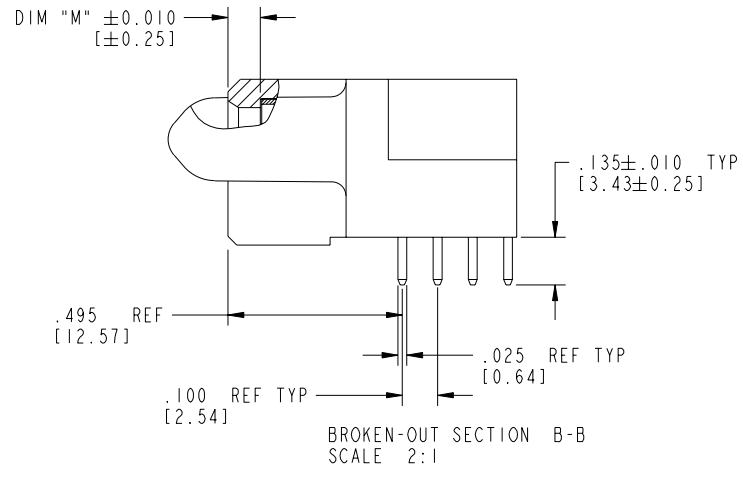
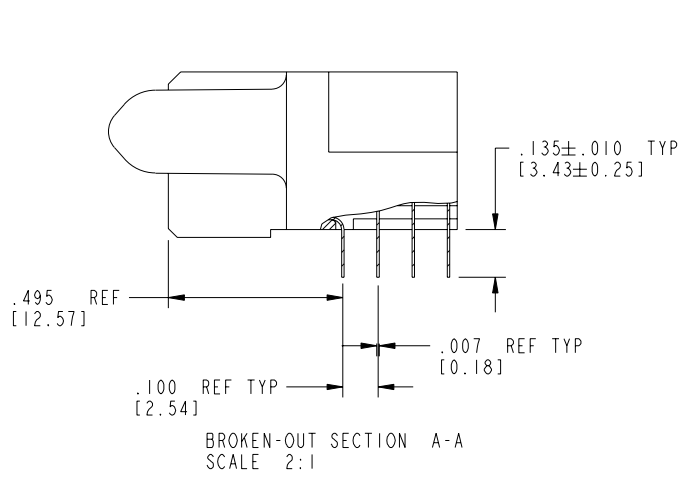
STATUS:Released

Printed: Aug 15, 2007

Tous droits strictement réservés. Reproduction ou communication a des tiers interdite sous quelque forme que ce soit sans autorisation écrite du propriétaire. Propriété de c FCI. Droits de reproduction FCI.

All rights strictly reserved. Reproduction or issue to third parties in any form whatever is not permitted without written authority from the proprietor. Property of FCI. Copyright FCI.

PRODUCT NUMBER  
51915-012--  
NOTE: 3



mat'l code		SEE NOTE 2		tolerances unless otherwise specified		CUSTOMER		 www.fciconnect.com	
ltr	ecn no.	dr	date	linear	.XX±.01/0.X±0.3	COPY		projection	title
B					.XXX±.005/0.XX±0.13				4P + 24S + 3ACP R/A SOLDER RECEPTACLE
				angles	.XXX±.0020/0.XXX±0.051				product family
				dr	0°±2°	INCH/MM			PwrBlade
				enr	C. DAILY 07/22/02	scale		A	code
				chr	M. MOSTOLLER 07/22/02	1:1		size	213
				appd	M. MOSTOLLER 07/22/02			dwg no	sheet
sheet index	revision sheet							51915-012	2 of 4

cage code 22526 4

Pro/E

Tous droits strictement réservés. Reproduction ou communication a des tiers interdite sous quelque forme que ce soit sans autorisation écrite du propriétaire. Propriété de c FCI. Droits de reproduction FCI.

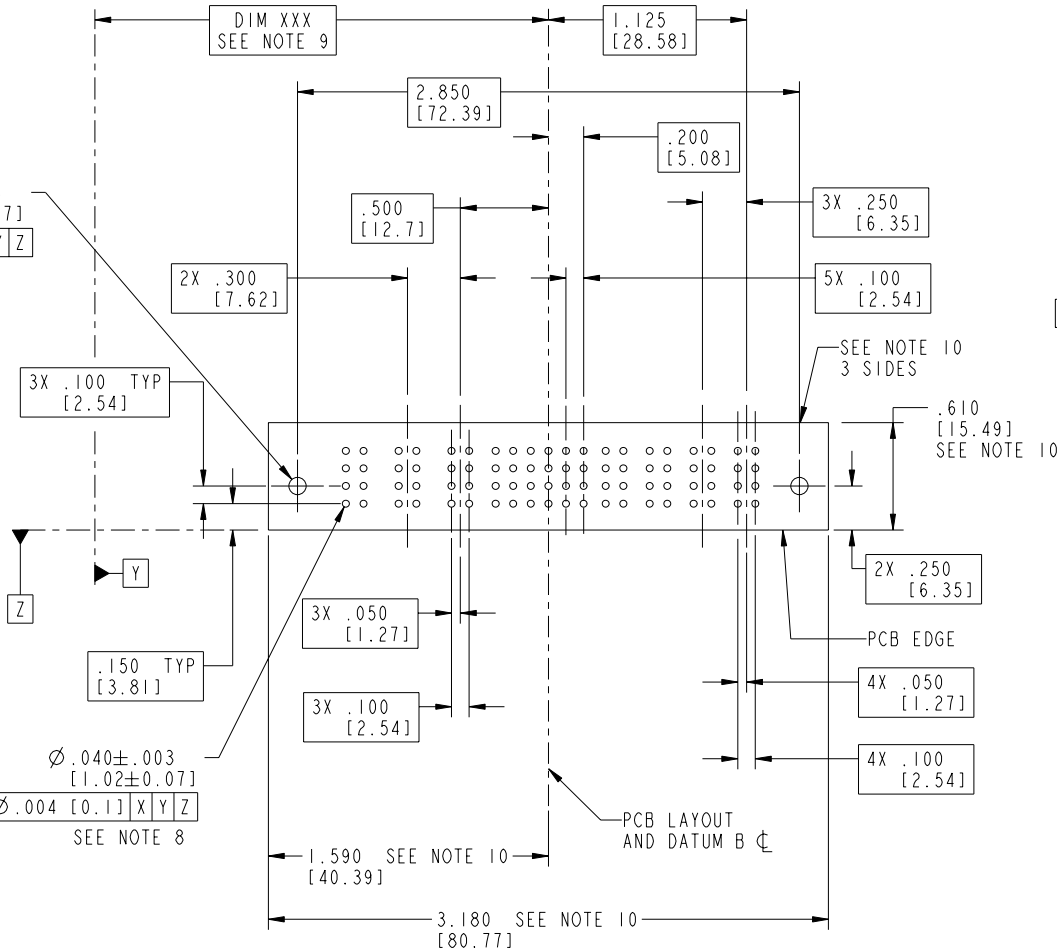
All rights strictly reserved. Reproduction or issue to third parties in any form whatever is not permitted without written authority from the proprietor. Property of FCI. Copyright FCI.



PRODUCT NUMBER  
51915-012--  
NOTE: 3

$\varnothing .098 \pm .003$   
[2.49 ± 0.07]  
 $\varnothing .004$  [0.1] X Y Z  
SEE NOTE 7

$\varnothing .040 \pm .003$   
[1.02 ± 0.07]  
 $\varnothing .004$  [0.1] X Y Z  
SEE NOTE 8



mat'l code		SEE NOTE 2		tolerances unless otherwise specified		CUSTOMER		 www.fciconnect.com	
ltr	ecn no.	dr	date	linear	.XX ± .01 / 0.X ± 0.3	COPY		projection	title
B					.XXX ± .005 / 0.XX ± 0.13				4P + 24S + 3ACP R/A SOLDER RECEPTACLE
				angles	.XXX ± .0020 / 0.XX ± 0.051				product family
				dr	0° ± 2°	INCH/MM			PwrBlade
				engr	C. DAILY 07/22/02	scale		size	code
				chr	M. MOSTOLLER 07/22/02	1:1		A	213
				appd	M. MOSTOLLER 07/22/02			51915-012	sheet
sheet index	revision sheet								3 of 4

cage code 22526 4

Pro/E

PDM: Rev:B

STATUS: Released

Printed: Aug 15, 2007

Tous droits strictement réservés. Reproduction ou communication à des tiers interdite sous quelque forme que ce soit sans autorisation écrite du propriétaire. Propriété de c FCI. Droits de reproduction FCI.

All rights strictly reserved. Reproduction or issue to third parties in any form whatever is not permitted without written authority from the proprietor. Property of FCI. Copyright FCI.

1 | 2

3 |

4

PRODUCT NUMBER  
51915-012\_\_  
NOTE: 3

NOTES:

1. DIMENSIONS AND TOLERANCES ARE IN ACCORDANCE WITH ASME Y14.5M, 1994 UNLESS OTHERWISE SPECIFIED.

CONNECTOR NOTES:

2. HOUSING MATERIAL: UL 94 V-0 GLASS FILLED

HIGH-TEMP THERMOPLASTIC  
POWER CONTACT MATERIAL: COPPER ALLOY  
SIGNAL PIN MATERIAL: COPPER ALLOY

3. PLATING:

51915-012 Singal Pin: 30u"/0.76um Au OVER 50u"/1.27um Ni ON THE CONTACT AREA,  
AND 100u"/2.54um SnPb PLATING OVER 50u"/1.27um Ni ON THE TERMINATION SECTION.  
Power Pin: 30u"/0.76um Au OVER 50u"/1.27um Ni ON THE CONTACT AREA,  
AND 100u"/2.54um SnPb PLATING OVER 50u"/1.27um Ni ON THE TERMINATION SECTION.

51915-012LF Singal Pin: 30u"/0.76um Au OVER 50u"/1.27um Ni ON THE CONTACT AREA,  
AND 78u"/2.00um Sn PLATING OVER 50u"/1.27um Ni ON THE TERMINATION SECTION.  
Power Pin: 30u"/0.76um Au OVER 50u"/1.27um Ni ON THE CONTACT AREA,  
AND 78u"/2.00um Sn PLATING OVER 50u"/1.27um Ni ON THE TERMINATION SECTION.

PART NUMBER 51915-012LF MEETS EUROPEAN UNION DIRECTIVE AND OTHER COUNTRY REGULATIONS AS DESCRIBED IN GS-22-008.

THE HOUSING WILL WITHSTAND EXPOSURE TO 260° PEAK TEMPERATURE FOR 10 SECONDS IN A WAVE SOLDER APPLICATION WITH A CIRCUIT BOARD.

4. MANUFACTURER'S NAME, P/N, AND DATE CODE TO APPEAR ON THIS SURFACE.

5. PRODUCT SPECIFICATION GS-12-149.  
APPLICATION SPECIFICATION BUS-20-067.

PCB NOTES:


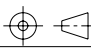
6. ALL HOLE DIAMETERS ARE FINISHED HOLE SIZE.

7. MOUNTING HOLES, WHERE APPLICABLE, ARE UNPLATED.

8.  $\varnothing .0453 \pm .0010$  [1.151  $\pm$  0.025] DRILLED HOLES PLATED WITH  
.0003 [0.008] MIN SnPb OVER .001 [0.03]  
TO .003 [0.08] Cu PLATING TO ACHIEVE  
 $\varnothing .040 \pm .003$  [1.02  $\pm$  .07] HOLE.

9. "DIM XXX" TO BE DETERMINED BY THE CUSTOMER.

10. CONNECTOR KEEP-OUT ZONE.

mat'l code				SEE NOTE 2		tolerances unless otherwise specified		CUSTOMER		 www.fciconnect.com	
ltr	ecn no.	dr	date	linear	.XX+ .01/0.X+0.3	COPY		projection		title	
B					.XXX+ .005/0.XX+0.13					4P + 24S + 3ACP R/A SOLDER RECEPTACLE	
				angles	XXXX+ .0020/0.XXX+0.051			INCH/MM		product family	
				dr	0° +2°			scale		PwrBlade	
				engr	C. DAILY 07/22/02			1:1		code	
				chr	M. MOSTOLLER 07/22/02			A		213	
				appd	M. MOSTOLLER 07/22/02			51915-012		sheet	
sheet index	revision sheet										4 of 4

cage code 22526

4

1 | 2

Pro/E

3 |

PDM: Rev:B

STATUS: Released

Printed: Aug 15, 2007